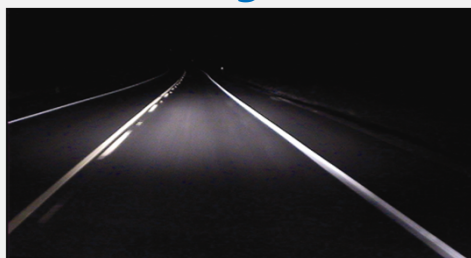




1. Suitable for completely dark environment, can recognize disguise or hidden target





2. Do not be interfered by strong light, backlight, Glare, and Weak light

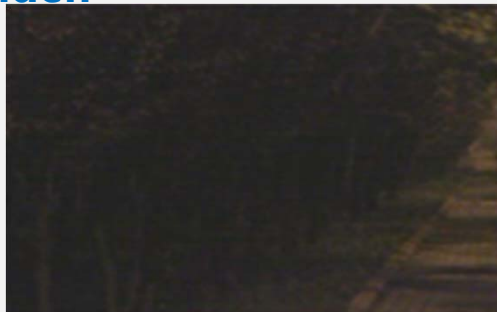




3. Can Penetrate severe environment such as smoke, foggy, raining, snow, dusty



4. Suitable for the environment which is very easy for hidden

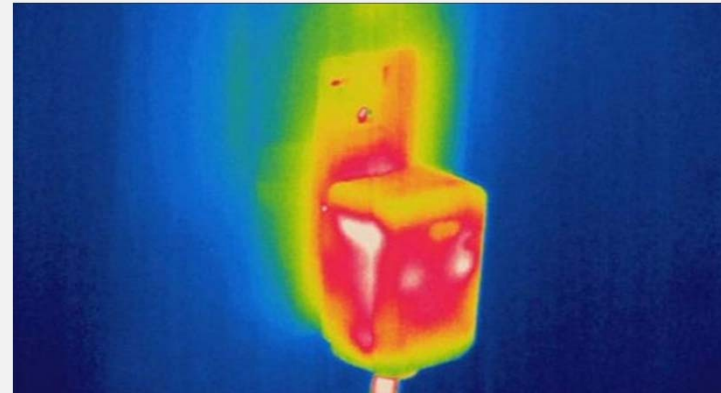




The cup with hot water



The working power adaptor



Traditional Perimeter Surveillance



Camera Surveillance+Alarm equipment



New Generation

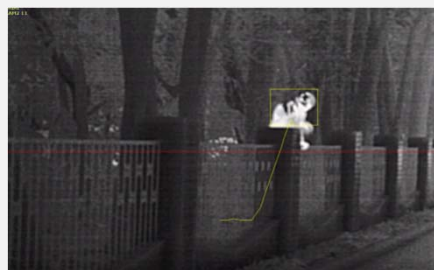
IP Thermal Camera+IVS



Normal Situation



People Presence



People prepared to climb



Perimeter Alarming